

# FINDING A PRIMARY CARE PROVIDER IN NOVA SCOTIA

September 2019 Report

Prepared for: Public



Reporting Cycle: Monthly

# INTRODUCTION

## Background

Nova Scotia Health Authority’s Need a Family Practice (NAFP) registry was launched on November 1, 2016. The registry provides a coordinated and consistent provincial approach for tracking Nova Scotians who self identify as not having access to a primary care provider (family physician or nurse practitioner).

People can register themselves and their family members on the NAFP registry online or by telephone to be contacted by a participating practice/provider that is accepting new patients. There are two main ways that contribute to how we report the number of people who have found a primary care provider in Nova Scotia: (1) Through names that are on the NAFP Registry and; (2) names that are not on the NAFP Registry and are sent to NSHA through other routes.

 <b>1. NSHA’s Need a Family Practice Registry</b>	 <b>2. Other Routes</b>
People can register themselves and their family members on the Need a Family Practice (NAFP) Registry online or by telephone to be contacted by a participating practice/provider that is accepting new patients.	People can find a primary care provider in other ways, such as with local family practices, through a family member who is an existing patient of a practice, or through a referral by another provider. Information on the number of patients accepted by family doctors who received the patient attachment incentive since April 2018 is also included in the ‘Other Routes’ category.

The term ‘**Found a Provider**’ is used throughout the report to depict the approximate number of people in Nova Scotia who have found a primary care provider and were registered on the NAFP registry and through other routes as tracked by NSHA since November 2016. The term ‘**Not Yet Placed**’ is used to depict the number of NAFP registrants who are seeking a primary care provider and have added their names to the NAFP registry.

The report highlights the overall volume of people who have found a provider and who are not yet placed by geography (zone, network, and cluster), as well as by month, with data as of **August 25, 2019**.

## Report Format

This report is divided into the following sections:

1. Total Provincial Volumes
2. Monthly Activity
3. Total Zonal Volumes – Found a Provider
4. Total Zonal Volumes – Not Yet Placed

# 1 | TOTAL PROVINCIAL VOLUMES



## Total Provincial Volumes – Found a Primary Care Provider

- As reported in the month of August, 5,746 people found a primary care provider.
- The overall number of people in Nova Scotia who have found a primary care provider (NAFP registry and other routes) as tracked by NSHA since November 2016 is 110,379.



## Total Provincial Volumes – Not Yet Placed

- As of the September 1, 2019 report, there were 52,430 registrants not yet placed with a family practice, which accounts for 5.7% of the total population in Nova Scotia (based on 2016 census data).
- This represents a 0.9% increase from the August 1, 2019 report where 51,980 registrants were not yet placed.

Figure 1 identifies the number of people in Nova Scotia who have found a primary care provider who were on the NAFP registry or identified through other routes as tracked by NSHA since November 2016.

**Figure 1: Total Provincial Volumes - Found a Primary Care Provider by Month**

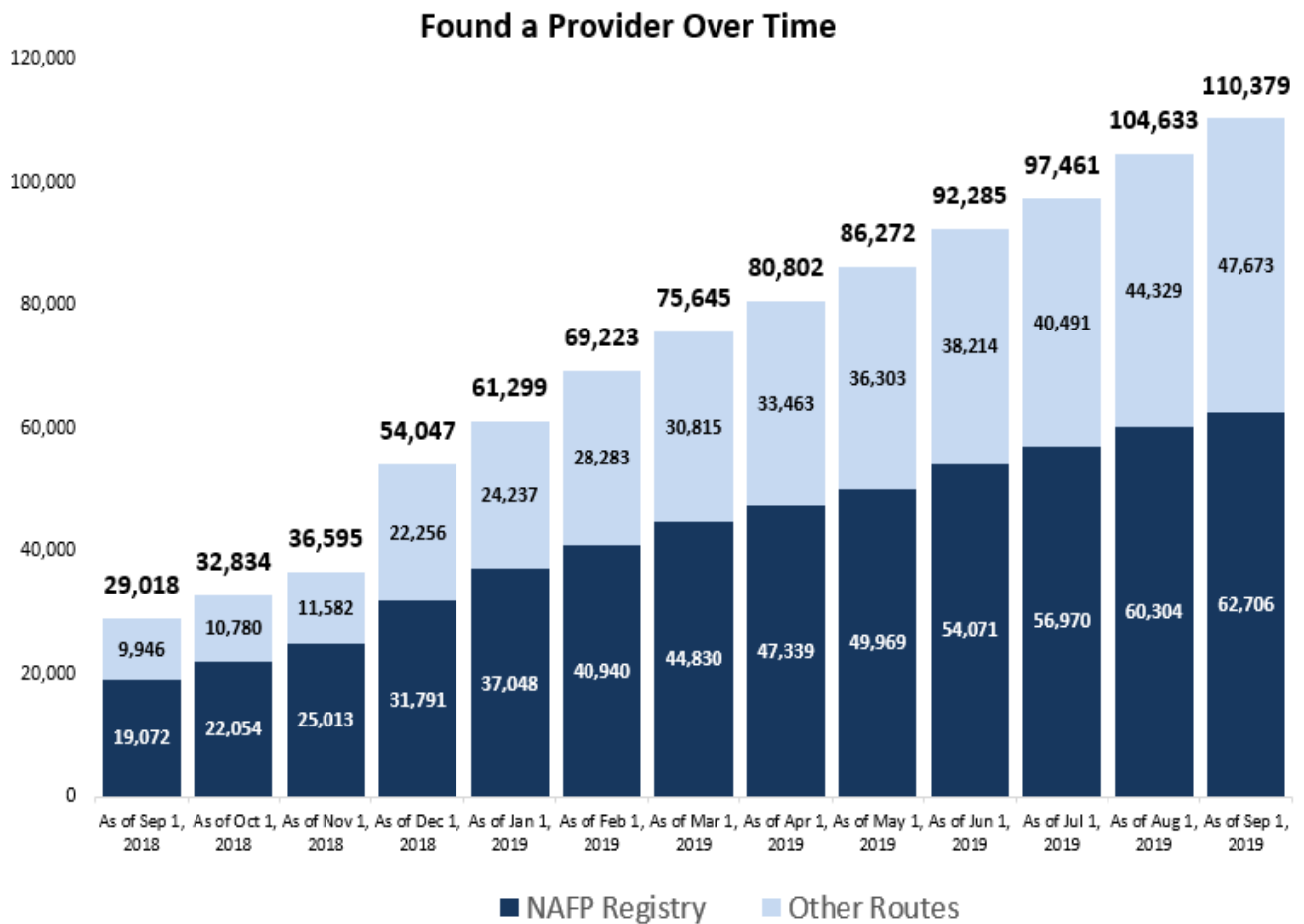
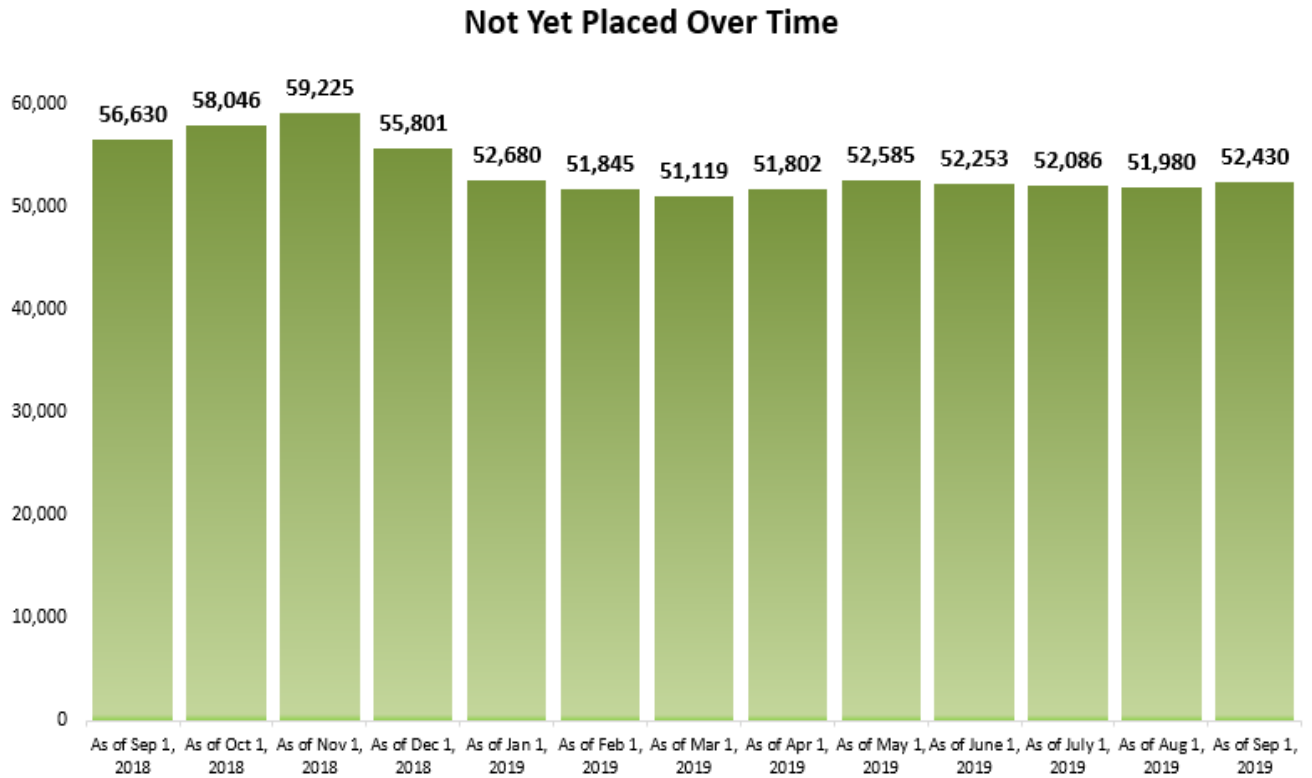


Figure 2 depicts the total number of registrants, by month, on the Need a Family Practice registry that are not yet placed with a family practice.

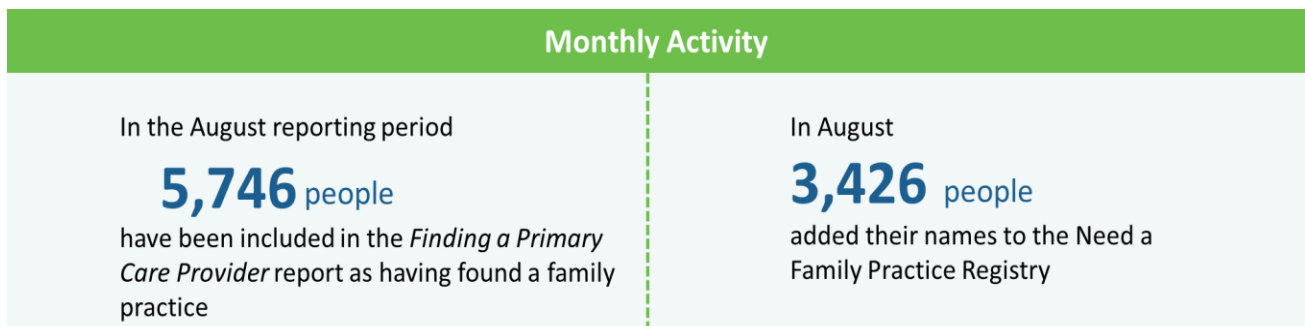
**Figure 2: Total Provincial Volumes - Not Yet Placed by Month**



## 2 | MONTHLY ACTIVITY

During the month of August, 5,746 people found a family doctor or nurse practitioner, and 3,426 people added their names to the Need a Family Practice registry as of September 1. Figure 3 highlights the overall monthly activity during the month of August 2019.

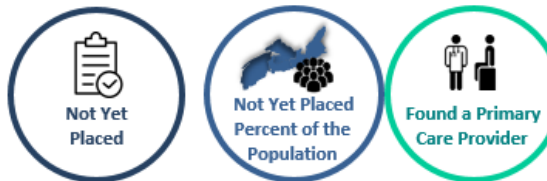
**Figure 3: Provincial Volumes - Monthly Activity**



## Monthly Activity by Zone

Figure 4 provides a summary of the monthly activity that occurred between the August 1 report and the September 1 report.

**Figure 4: Total Zonal Monthly Activity**



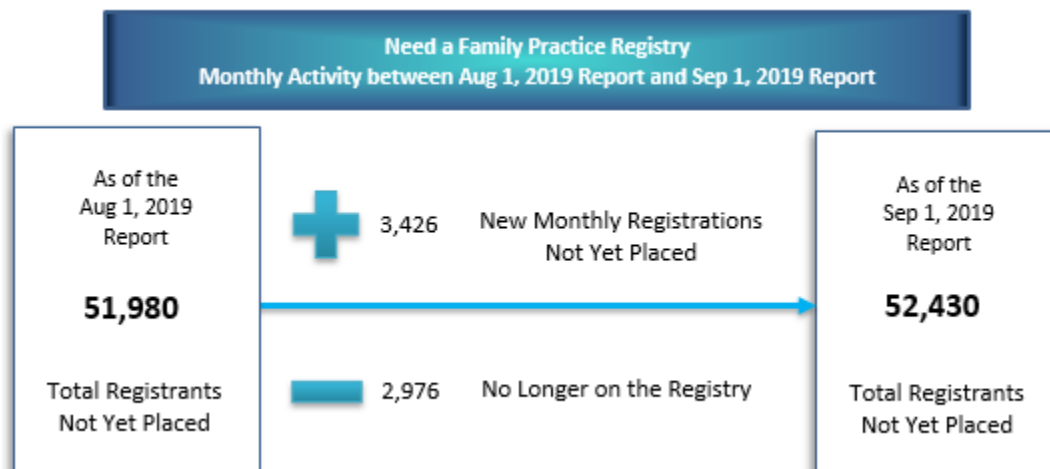
		Aug 1, 2019	Sep 1, 2019	% Change	Sep 1, 2019	Sep 1, 2019
<b>Central Zone</b>	Bedford /Sackville, Dartmouth / Southeastern, Eastern Shore Musquodoboit, Halifax Peninsula / Chebucto, and West Hants	16,000	15,255	-4.7%	3.6%	55,739
<b>Eastern Zone</b>	Antigonish and Guysborough, Cape Breton County, and Inverness /Victoria / Richmond	4,176	4,098	-1.9%	2.6%	20,408
<b>Northern Zone</b>	Colchester, Cumberland, and Pictou County	11,959	12,368	3.4%	8.4%	14,235
<b>Western Zone</b>	Annapolis and Kings, Queens and Lunenburg and Yarmouth / Shelburne / Digby	19,822	20,565	3.7%	10.6%	19,773
<b>Unknown Geography</b>	Unknown Geography	23	144	-	-	224
<b>NOVA SCOTIA</b>	<b>TOTAL ACROSS NOVA SCOTIA</b>	<b>51,980</b>	<b>52,430</b>	<b>0.9%</b>	<b>5.7%</b>	<b>110,379</b>

\*Not yet placed percent of the population relative to the geography's population (i.e., zone)

## Monthly Registry Activity

Specific to the NAFP registry during the month of August, 3,426 new registrations occurred (people who need a family practice) and 2,976 registrants were removed from the registry. People are removed from the registry because they were assisted with finding a family practice or for other reasons, such as already having found a provider when contacted by NSHA or having a duplicate registration. Figure 5 highlights the overall activity in the NAFP registry during the month of August 2019.

**Figure 5: Monthly NAFP Registry Activity**

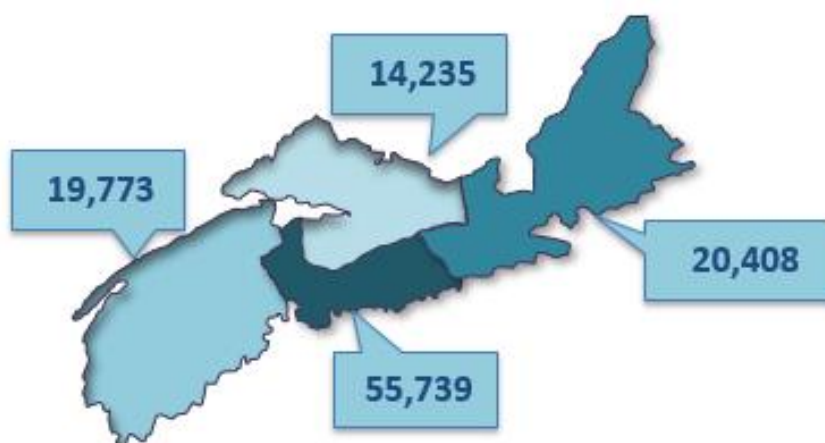


The registry is dynamic, with registrants being added and removed each day. Figure 5 is a simplified graphic that compares two snapshots, one month apart. It depicts the change in the registry total, showing the number of those who have newly registered in the past month, minus the number of people who were no longer on the registry, which is a total of the number of registrants who found a provider and those who have been removed from the registry for other reasons.

### 3 | TOTAL ZONAL VOLUMES: FOUND A PRIMARY CARE PROVIDER

As of September 1, 110,379 Nova Scotians have found a primary care provider who were registered on the NAFP registry or identified through other routes as tracked by NSHA, since November 2016. Figure 6 depicts the breakdown of individuals, by zone, that have found a provider.

**Figure 6:** Total Zonal Volumes - Found a Primary Care Provider



\*Note: 224 have an unknown zone

Table 1 provides the geographic breakdown of the number of people by zone, network, and cluster that found a primary care provider as reported through the NAFP registry or other routes tracked by NSHA, since November 2016.

**Table 1:** Total Zone, Network, and Cluster Volumes - Found a Primary Care Provider – September 1, 2019 Report

Total Zone, Network, and Cluster Volumes - Found a Primary Care Provider – September 1, 2019 Report	
Zone/Network/Cluster	Total # Found a Provider
<b>Central</b>	<b>55,739</b>
<b>Bedford / Sackville</b>	<b>8,725</b>
Bedford / Hammonds Plains	3,960
Fall River / Waverley	1,094
Sackville North / Beaverbank / Mount Uniacke	1,931
Sackville South	1,740
<b>Dartmouth / Southeastern</b>	<b>16,593</b>
Cole Harbour / Eastern Passage	4,245
Dartmouth East	4,860

<b>Total Zone, Network, and Cluster Volumes - Found a Primary Care Provider – September 1, 2019 Report</b>	
<b>Zone/Network/Cluster</b>	<b>Total # Found a Provider</b>
Dartmouth North	2,812
Dartmouth South	3,567
Preston / Lawrencetown / Lake Echo	1,109
<b>Eastern Shore Musquodoboit</b>	<b>2,505</b>
Eastern Shore Musquodoboit	2,505
<b>Halifax Peninsula / Chebucto</b>	<b>21,113</b>
Armdale / Spryfield / Herring Cove	3,123
Clayton Park	4,510
Fairview	2,249
Halifax Chebucto	2,324
Halifax Citadel	2,335
Halifax Needham	2,665
Sambro Loop Area	1,147
Tantallon / Timberlea / St.Margaret's Bay	2,760
<b>West Hants</b>	<b>6,803</b>
West Hants	6,803
<b>Eastern</b>	<b>20,408</b>
<b>Antigonish and Guysborough</b>	<b>876</b>
Antigonish	723
Guysborough / Canso	107
Sherbrooke	46
<b>Cape Breton County</b>	<b>14,224</b>
Dominion / Glace Bay	2,546
Florence / Sydney Mines / North Sydney	2,567
New Waterford	1,796
Sydney	7,315
<b>Inverness / Victoria / Richmond</b>	<b>5,308</b>
Baddeck / Whycomomagh	2,540
Cheticamp	581
Dingwall	40
Inverness	322
Port Hawkesbury / Isle Madame / L'Ardoise	1,825
<b>Northern</b>	<b>14,235</b>
<b>Colchester East Hants</b>	<b>7,907</b>
East Hants Corridor	461
Economy / Glenholme	147
Hants North	525
South Colchester	376
Truro and Area	6,398
<b>Cumberland</b>	<b>2,107</b>
Amherst	369
North Cumberland / North Shore	730
South Cumberland	227

<b>Total Zone, Network, and Cluster Volumes - Found a Primary Care Provider – September 1, 2019 Report</b>	
<b>Zone/Network/Cluster</b>	<b>Total # Found a Provider</b>
Springhill	781
<b>Pictou County</b>	<b>4,221</b>
New Glasgow / Westville / Stellarton	2,567
Pictou West	1,654
<b>Western</b>	<b>19,773</b>
<b>Annapolis and Kings</b>	<b>8,423</b>
Annapolis Royal	274
Berwick	1,105
Kentville	3,353
Middleton	2,470
Wolfville	1,221
<b>Queens and Lunenburg</b>	<b>6,300</b>
Bridgewater	2,330
Chester	1,563
Liverpool	1,639
Lunenburg / Mahone Bay	768
<b>Yarmouth / Shelburne / Digby</b>	<b>5,050</b>
Digby / Clare / Weymouth	1,612
Shelburne / Lockeport	1,280
Yarmouth	2,158
<b>Unknown</b>	<b>224</b>
<b>Total Found a Provider</b>	<b>110,379</b>



## 4 | TOTAL ZONAL VOLUMES – NOT YET PLACED

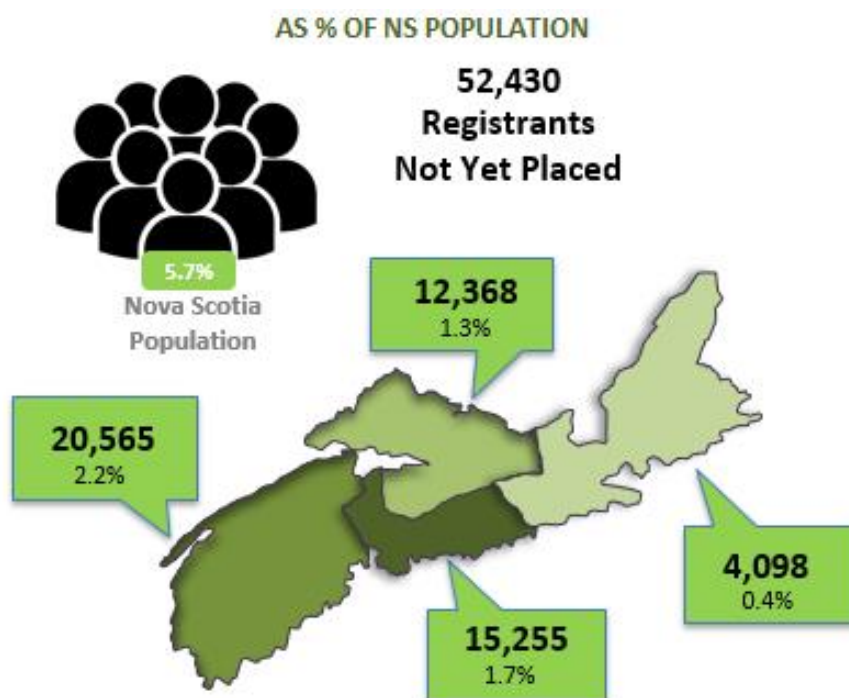
There are 52,430 registrants not yet placed with a family practice as of the September 1 report. The total volumes by zone\* are:

- Central Zone: 15,255 registrations
- Eastern Zone: 4,098 registrations
- Northern Zone: 12,368 registrations
- Western Zone: 20,565 registrations

\*Note: 144 have an unknown zone

Figure 7 gives a high-level overview of the volume of NAFP registrants who are not yet placed, by zone, as a percent of the total Nova Scotia population based on 2016 census counts.

**Figure 7: Total Zonal Volumes - Not Yet Placed as a Percent of the Total Nova Scotia Population**



\*Note: 144 have an unknown zone

Table 2 gives a detailed geographical breakdown of the volume of registrants not yet placed by zone, network, and cluster and as a percent of the corresponding Nova Scotia population by zone, network, and cluster.

**Table 2: Total Volumes Not Yet Placed by Zone, Network, and Cluster and as Percent of Population by Zone, Network, and Cluster**

Total Zone, Network, and Cluster Volumes – Not Yet Placed – September 1, 2019 Report			
Zone/Network/Cluster	Total # Not Yet Placed	Population by Zone, Network, Cluster (2016)	% of Population by Zone, Network, Cluster (2016)
Central	15,255	423,498	3.6%
<b>Bedford / Sackville</b>	<b>2,820</b>	<b>99,581</b>	<b>2.8%</b>

Total Zone, Network, and Cluster Volumes – Not Yet Placed – September 1, 2019 Report			
Zone/Network/Cluster	Total # Not Yet Placed	Population by Zone, Network, Cluster (2016)	% of Population by Zone, Network, Cluster (2016)
Bedford / Hammonds Plains	1,360	40,679	3.3%
Fall River / Waverley	506	21,153	2.4%
Sackville North / Beaverbank / Mount Uniacke	326	15,424	2.1%
Sackville South	628	22,325	2.8%
<b>Dartmouth / Southeastern</b>	<b>4,114</b>	<b>116,491</b>	<b>3.5%</b>
Cole Harbour / Eastern Passage	957	35,355	2.7%
Dartmouth East	759	23,264	3.3%
Dartmouth North	967	19,833	4.9%
Dartmouth South	1,147	27,284	4.2%
Preston / Lawrencetown / Lake Echo	284	10,755	2.6%
<b>Eastern Shore Musquodoboit</b>	<b>434</b>	<b>17,474</b>	<b>2.5%</b>
Eastern Shore Musquodoboit	434	17,474	2.5%
<b>Halifax Peninsula / Chebucto</b>	<b>7,307</b>	<b>169,768</b>	<b>4.3%</b>
Armdale / Spryfield / Herring Cove	876	25,640	3.4%
Clayton Park	2,201	34,194	6.4%
Fairview	768	17,104	4.5%
Halifax Chebucto	776	18,939	4.1%
Halifax Citadel	1,187	22,106	5.4%
Halifax Needham	937	19,426	4.8%
Sambro Loop Area	312	12,660	2.5%
Tantallon / Timberlea / St. Margaret's Bay	250	19,699	1.3%
<b>West Hants</b>	<b>580</b>	<b>20,184</b>	<b>2.9%</b>
West Hants	580	20,184	2.9%
<b>Eastern</b>	<b>4,098</b>	<b>158,936</b>	<b>2.6%</b>
<b>Antigonish and Guysborough</b>	<b>316</b>	<b>26,926</b>	<b>1.2%</b>
Antigonish	274	19,301	1.4%
Guysborough / Canso	35	5,039	0.7%
Sherbrooke	7	2,586	0.3%
<b>Cape Breton County</b>	<b>3,407</b>	<b>99,590</b>	<b>3.4%</b>
Dominion / Glace Bay	713	20,713	3.4%
Florence / Sydney Mines / North Sydney	548	19,679	2.8%
New Waterford	555	9,454	5.9%
Sydney	1,591	49,744	3.2%
<b>Inverness / Victoria / Richmond</b>	<b>375</b>	<b>32,420</b>	<b>1.2%</b>
Baddeck / Whycocomagh	16	3,654	0.4%
Cheticamp	1	3,903	0.0%
Inverness	14	6,932	0.2%

Total Zone, Network, and Cluster Volumes – Not Yet Placed – September 1, 2019 Report			
Zone/Network/Cluster	Total # Not Yet Placed	Population by Zone, Network, Cluster (2016)	% of Population by Zone, Network, Cluster (2016)
Port Hawkesbury / Isle Madame / L'Ardoise	344	15,364	2.2%
Dingwall	0	2,567	0.0%
<b>Northern</b>	<b>12,367</b>	<b>147,500</b>	<b>8.4%</b>
<b>Colchester East Hants</b>	<b>5,815</b>	<b>70,658</b>	<b>8.2%</b>
East Hants Corridor	734	12,674	5.8%
Economy / Glenholme	291	5,277	5.5%
Hants North	491	6,945	7.1%
South Colchester	307	10,792	2.8%
Truro and Area	3,992	34,971	11.4%
<b>Cumberland</b>	<b>2,504</b>	<b>33,094</b>	<b>7.6%</b>
Amherst	1,509	13,143	11.5%
North Cumberland / North Shore	627	8,665	7.2%
South Cumberland	169	3,864	4.4%
Springhill	199	7,422	2.7%
<b>Pictou County</b>	<b>4,049</b>	<b>43,748</b>	<b>9.3%</b>
New Glasgow / Westville / Stellarton	3,303	33,561	9.8%
Pictou West	746	10,187	7.3%
<b>Western</b>	<b>20,565</b>	<b>193,664</b>	<b>10.6%</b>
<b>Annapolis and Kings</b>	<b>9,521</b>	<b>78,793</b>	<b>12.1%</b>
Annapolis Royal	971	6,056	16.0%
Berwick	2,085	13,764	15.1%
Kentville	1,607	23,893	6.7%
Middleton	4,332	20,910	20.7%
Wolfville	526	14,170	3.7%
<b>Queens and Lunenburg</b>	<b>5,389</b>	<b>57,933</b>	<b>9.3%</b>
Bridgewater	2,581	26,711	9.7%
Chester	929	10,351	9.0%
Liverpool	1,000	9,093	11.0%
Lunenburg / Mahone Bay	879	11,778	7.5%
<b>Yarmouth / Shelburne / Digby</b>	<b>5,655</b>	<b>56,938</b>	<b>9.9%</b>
Digby / Clare / Weymouth	2,372	18,553	12.8%
Shelburne / Lockeport	973	13,966	7.0%
Yarmouth	2,310	24,419	9.5%
<b>Unknown</b>	<b>144</b>	<b>-</b>	<b>0.0%</b>
<b>Total # Not Yet Placed</b>	<b>52,430</b>	<b>923,598</b>	<b>5.7%</b>