

FINDING A PRIMARY CARE PROVIDER IN NOVA SCOTIA

November 2018 Report

Prepared for: Public

Reporting Cycle: Monthly



INTRODUCTION

Background

Nova Scotia Health Authority's Need a Family Practice (NAFP) registry was launched on November 1, 2016. The registry provides a coordinated and consistent provincial approach for tracking Nova Scotians who self identify as not having access to a primary care provider (family physician or nurse practitioner).

People can register themselves and their family members on the NAFP registry online or by telephone to be contacted by a participating practice/provider that is accepting new patients.

There are two main ways to find a primary care provider in Nova Scotia: (1) Through the Need a Family Practice (NAFP) Registry and; (2) through other routes, such as with local family practices.

 1. Through NSHA's Need a Family Practice Registry	 2. Through Other Routes
People can register themselves and their family members on the Need a Family Practice (NAFP) Registry online or by telephone to be contacted by a participating practice/provider that is accepting new patients.	People can find a primary care provider in other ways, such as with local family practices, through a family member who is an existing patient of a practice, or through a referral by another provider.

The term '**Found a Provider**' is used throughout the report to depict the approximate number of people in Nova Scotia who have found a primary care provider through the NAFP registry and through other routes as tracked by NSHA since November 2016. The term '**Not Yet Placed**' is used to depict the number of NAFP registrants who are seeking a primary care provider through means of registering for the NAFP registry.

The following report highlights the overall volume of people who have found a provider and who are not yet placed by geography (zone, network, and cluster), as well as by month, with data as of **October 25, 2018**.

Report Format

This report is divided into the following sections:

1. Total Provincial Volumes
2. Monthly Activity
3. Total Zonal Volumes – Found a Provider
4. Total Zonal Volumes – Not Yet Placed

1 | TOTAL PROVINCIAL VOLUMES



Total Provincial Volumes – Found a Primary Care Provider

- Over the month of October, 3,761 people found a primary care provider.
- The overall number of people in Nova Scotia who have found a primary care provider through the NAFP registry and through other routes, such as with local family practices, as tracked by NSHA since November 2016 is 36,595.



Total Provincial Volumes – Not Yet Placed

- As of the November 1, 2018 report, there were 59,225 registrants not yet placed with a family practice, which accounts for 6.4% of the total population in Nova Scotia (based on 2011 census data).
- This represents a 2.0% increase from the October 1, 2018 report where 58,046 registrants were not yet placed.

Figure 1 identifies the number of people in Nova Scotia who have found a primary care provider through the NAFP registry and through other routes as tracked by NSHA since November 2016.

Figure 1: Total Provincial Volumes – Found a Primary Care Provider

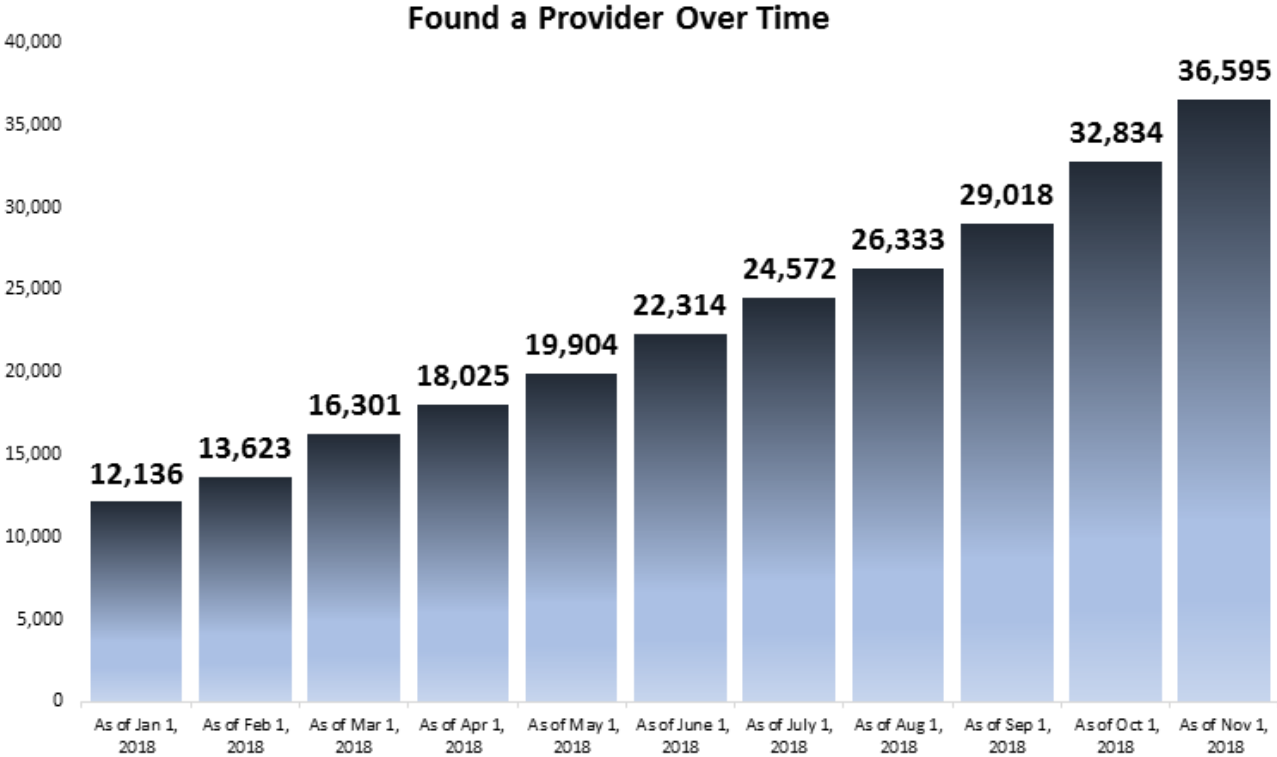


Figure 2 depicts the total number of registrants, by month, on the Need a Family Practice registry that are not yet placed with a family practice.

Figure 2: Total Provincial Volumes - Not Yet Placed by Month



2 | MONTHLY ACTIVITY

During the month of October, 3,761 people found a family doctor or nurse practitioner and 3,076 people added their names to the Need a Family Practice registry. Figure 3 highlights the overall monthly activity during the month of October 2018.

Figure 3: Provincial Volumes - Monthly Activity





		Oct 1, 2018	Nov 1, 2018	% Change	Nov 1, 2018	Nov 1, 2018
Central Zone	Halifax Regional Municipality, Eastern Shore and West Hants Areas	29,592	29,544	-0.2%	7.2%	15,619
Eastern Zone	Cape Breton, Antigonish and Guysborough Areas	5,010	4,965	-0.9%	3.0%	9,074
Northern Zone	Colchester, Cumberland, and Pictou County Areas	6,889	7,327	6.4%	4.9%	4,931
Western Zone	Annapolis Valley, South West, and South Shore Areas	16,461	17,384	5.6%	8.9%	6,971
Unknown Geography	Unknown Geography	94	5	-	-	-
NOVA SCOTIA	TOTAL ACROSS NOVA SCOTIA	58,046	59,225	2.0%	6.4%	36,595

*Not yet placed percent of the population relative to the geography's population (i.e., zone)

3 | TOTAL ZONAL VOLUMES: FOUND A PRIMARY CARE PROVIDER

As of November 1, 36,595 Nova Scotians have found a primary care provider through the NAFP registry and through other routes as tracked by NSHA, since November 2016. Figure 5 depicts the breakdown of individuals, by zone, that have found a provider.

Figure 5: Total Zonal Volumes – Found a Primary Care Provider

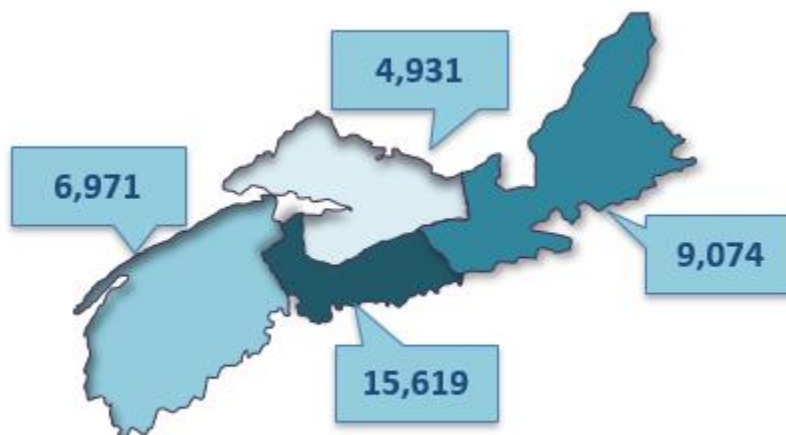


Table 1 provides the geographic breakdown of the number of people by zone, network, and cluster that found a primary care provider as reported through the NAFP registry or other routes tracked by NSHA, since November 2016.

Table 1: Total Zone, Network, and Cluster Volumes - Found a Primary Care Provider – November 1, 2018 Report

Total Zone, Network, and Cluster Volumes - Found a Primary Care Provider – November 1, 2018 Report	
Zone/Network/Cluster	Total # Found a Provider
Central	15,619
Bedford / Sackville	1,555
Bedford / Hammonds Plains	695
Fall River / Waverley	178
Sackville North / Beaverbank / Mount Uniacke	363
Sackville South	319
Dartmouth / Southeastern	4,136
Cole Harbour / Eastern Passage	397
Dartmouth East	2,153
Dartmouth North	667
Dartmouth South	439
Preston / Lawrencetown / Lake Echo	480
Eastern Shore Musquodoboit	1,344
Eastern Shore Musquodoboit	1,344
Halifax Peninsula / Chebucto	4,733
Armdale / Spryfield / Herring Cove	963
Clayton Park	734
Fairview	357
Halifax Chebucto	365
Halifax Citadel	356
Halifax Needham	401
Sambro Loop Area	352
Tantallon / Timberlea / St.Margaret's Bay	1,205
West Hants	3,851
West Hants	3,851
Eastern	9,074
Antigonish and Guysborough	190
Antigonish	122
Guysborough / Canso	56
Sherbrooke	12
Cape Breton County	6,786
Dominion / Glace Bay	1,512
Florence / Sydney Mines / North Sydney	785
New Waterford	662
Sydney	3,827

Total Zone, Network, and Cluster Volumes - Found a Primary Care Provider – November 1, 2018 Report	
Zone/Network/Cluster	Total # Found a Provider
Inverness / Victoria / Richmond	2,098
Baddeck / Whycocomagh	576
Cheticamp	543
Dingwall	8
Inverness	161
Port Hawkesbury / Isle Madame / L'Ardoise	810
Northern	4,931
Colchester East Hants	2,552
East Hants Corridor	5
Economy / Glenholme	6
Hants North	47
South Colchester	129
Truro and Area	2,365
Cumberland	849
Amherst	33
North Cumberland / North Shore	539
South Cumberland	66
Springhill	211
Pictou County	1,530
New Glasgow / Westville / Stellarton	1,466
Pictou West	64
Western	6,971
Annapolis and Kings	3,766
Annapolis Royal	50
Berwick	125
Kentville	1,768
Middleton	1,429
Wolfville	394
Queens and Lunenburg	1,528
Bridgewater	230
Chester	574
Liverpool	342
Lunenburg / Mahone Bay	382
Yarmouth / Shelburne / Digby	1,677
Digby / Clare / Weymouth	688
Shelburne / Lockeport	553
Yarmouth	436
Total Found a Provider	36,595

4 | TOTAL ZONAL VOLUMES – NOT YET PLACED

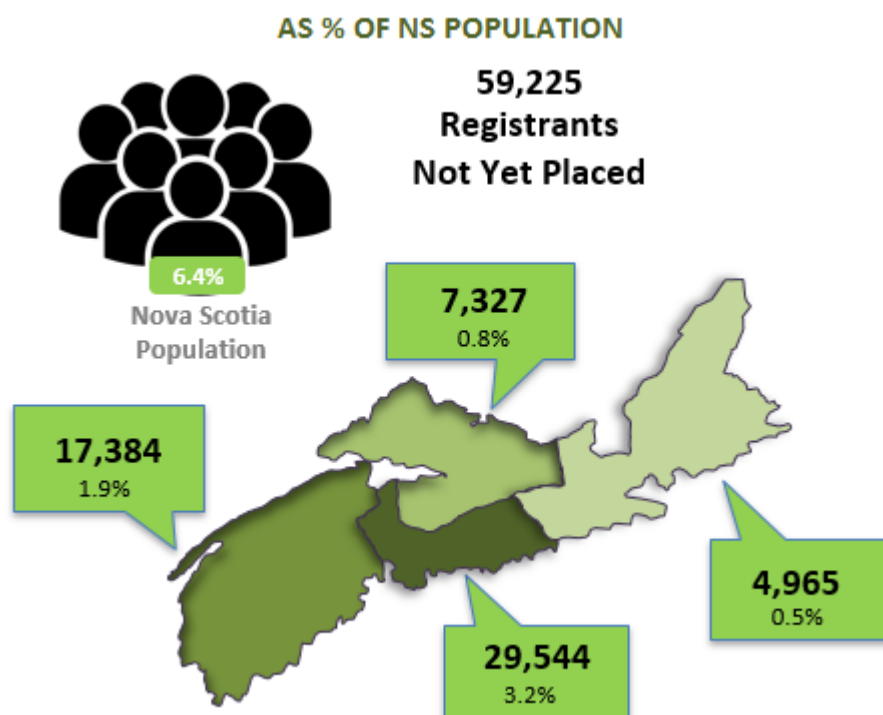
There were 59,225 registrants not yet placed with a family practice as of the November 1 report. The total volumes by zone* were:

- Central Zone: 29,544 registrations
- Eastern Zone: 4,965 registrations
- Northern Zone: 7,327 registrations
- Western Zone: 17,384 registrations

*Note: 5 registrations have an unknown zone

Figure 6 gives a high-level overview of the volume of NAFP registrants who are not yet placed, by zone, as a percent of the total Nova Scotia population based on 2011 census counts.

Figure 6: Total Zonal Volumes - Not Yet Placed as a Percent of the total Nova Scotia Population



*Note: 5 registrations have an unknown zone

Table 2 gives a detailed geographical breakdown of the volume of registrants not yet placed by zone, network, and cluster and as a percent of the corresponding Nova Scotia population by zone, network, and cluster.

Table 2: Total Volumes Not Yet Placed by Zone, Network, and Cluster and as Percent of Population by Zone, Network, and Cluster

Zone/Network/Cluster	Total # Not Yet Placed	Population by Zone, Network, Cluster (2011)	% of Population by Zone, Network, Cluster (2011)
Central	29,544	409,706	7.2%
Bedford / Sackville	5,133	87,838	5.8%
Bedford / Hammonds Plains	2,230	30,109	7.4%

Zone/Network/Cluster	Total # Not Yet Placed	Population by Zone, Network, Cluster (2011)	% of Population by Zone, Network, Cluster (2011)
Fall River / Waverley	662	13,994	4.7%
Sackville North / Beaverbank / Mount Uniacke	1,203	22,356	5.4%
Sackville South	1,038	21,379	4.9%
Dartmouth / Southeastern	10,418	115,427	9.0%
Cole Harbour / Eastern Passage	3,231	36,902	8.8%
Dartmouth East	1,813	23,616	7.7%
Dartmouth North	2,157	19,238	11.2%
Dartmouth South	2,735	24,719	11.1%
Preston / Lawrencetown / Lake Echo	482	10,952	4.4%
Eastern Shore Musquodoboit	816	18,165	4.5%
Eastern Shore Musquodoboit	816	18,165	4.5%
Halifax Peninsula / Chebucto	12,981	167,379	7.8%
Armdale / Spryfield / Herring Cove	1,582	23,502	6.7%
Clayton Park	3,592	34,439	10.4%
Fairview	1,371	15,789	8.7%
Halifax Chebucto	1,734	18,764	9.2%
Halifax Citadel	1,817	20,055	9.1%
Halifax Needham	1,883	20,192	9.3%
Sambro Loop Area	483	13,408	3.6%
Tantallon / Timberlea / St.Margaret's Bay	519	21,230	2.4%
West Hants	196	20,897	0.9%
West Hants	196	20,897	0.9%
Eastern	4,965	163,450	3.0%
Antigonish and Guysborough	367	27,548	1.3%
Antigonish	343	19,583	1.8%
Guysborough / Canso	20	5,122	0.4%
Sherbrooke	< 5	2,843	0.1%
Cape Breton County	3,871	102,397	3.8%
Dominion / Glace Bay	974	21,782	4.5%
Florence / Sydney Mines / North Sydney	1,113	19,870	5.6%
New Waterford	603	9,757	6.2%
Sydney	1,181	50,988	2.3%
Inverness / Victoria / Richmond	727	33,505	2.2%
Baddeck / Whycomomagh	106	5,382	2.0%
Cheticamp	9	4,688	0.2%
Inverness	44	4,667	0.9%
Port Hawkesbury / Isle Madame / L'Ardoise	567	16,035	3.5%

Zone/Network/Cluster	Total # Not Yet Placed	Population by Zone, Network, Cluster (2011)	% of Population by Zone, Network, Cluster (2011)
Dingwall	< 5	2,733	0.0%
Northern	7,327	150,409	4.9%
Colchester East Hants	3,802	69,991	5.4%
East Hants Corridor	663	12,860	5.2%
Economy / Glenholme	153	5,078	3.0%
Hants North	121	6,613	1.8%
South Colchester	197	10,001	2.0%
Truro and Area	2,668	35,439	7.5%
Cumberland	1,043	34,750	3.0%
Amherst	319	14,819	2.2%
North Cumberland / North Shore	572	8,395	6.8%
South Cumberland	75	4,311	1.7%
Springhill	77	7,225	1.1%
Pictou County	2,482	45,668	5.4%
New Glasgow / Westville / Stellarton	1,894	34,916	5.4%
Pictou West	588	10,752	5.5%
Western	17,384	196,284	8.9%
Annapolis and Kings	7,668	78,507	9.8%
Annapolis Royal	575	6,026	9.5%
Berwick	2,183	13,161	16.6%
Kentville	1,764	24,944	7.1%
Middleton	2,620	21,022	12.5%
Wolfville	526	13,354	3.9%
Queens and Lunenburg	5,893	59,384	9.9%
Bridgewater	2,806	28,417	9.9%
Chester	926	12,271	7.5%
Liverpool	1,639	10,908	15.0%
Lunenburg / Mahone Bay	522	7,788	6.7%
Yarmouth / Shelburne / Digby	3,823	58,393	6.5%
Digby / Clare / Weymouth	2,264	18,899	12.0%
Shelburne / Lockeport	553	14,506	3.8%
Yarmouth	1,006	24,988	4.0%
Unknown	5	-	0.0%
Total # Not Yet Placed	59,225	919,849	6.4%