

# FINDING A PRIMARY CARE PROVIDER IN NOVA SCOTIA

August 2019 Report

Prepared for: Public



Reporting Cycle: Monthly

# INTRODUCTION

## Background

Nova Scotia Health Authority's Need a Family Practice (NAFP) registry was launched on November 1, 2016. The registry provides a coordinated and consistent provincial approach for tracking Nova Scotians who self identify as not having access to a primary care provider (family physician or nurse practitioner).

People can register themselves and their family members on the NAFP registry online or by telephone to be contacted by a participating practice/provider that is accepting new patients. There are two main ways that contribute to how we report the number of people who have found a primary care provider in Nova Scotia: (1) Through names that are on the NAFP Registry and; (2) names that are not on the NAFP Registry and are sent to NSHA through other routes.

 <b>1. NSHA's Need a Family Practice Registry</b>	 <b>2. Other Routes</b>
People can register themselves and their family members on the Need a Family Practice (NAFP) Registry online or by telephone to be contacted by a participating practice/provider that is accepting new patients.	People can find a primary care provider in other ways, such as with local family practices, through a family member who is an existing patient of a practice, or through a referral by another provider. Information on the number of patients accepted by family doctors who received the patient attachment incentive since April 2018 is also included in the 'Other Routes' category.

The term '**Found a Provider**' is used throughout the report to depict the approximate number of people in Nova Scotia who have found a primary care provider and were registered on the NAFP registry and through other routes as tracked by NSHA since November 2016. The term '**Not Yet Placed**' is used to depict the number of NAFP registrants who are seeking a primary care provider and have added their names to the NAFP registry.

The report highlights the overall volume of people who have found a provider and who are not yet placed by geography (zone, network, and cluster), as well as by month, with data as of **July 25, 2019**.

## Report Format

This report is divided into the following sections:

1. Total Provincial Volumes
2. Monthly Activity
3. Total Zonal Volumes – Found a Provider
4. Total Zonal Volumes – Not Yet Placed

# 1 | TOTAL PROVINCIAL VOLUMES



## Total Provincial Volumes – Found a Primary Care Provider

- As reported in the month of July, 7,172 people found a primary care provider.
- The overall number of people in Nova Scotia who have found a primary care provider (NAFP registry and other routes) as tracked by NSHA since November 2016 is 104,633.



## Total Provincial Volumes – Not Yet Placed

- As of the August 1, 2019 report, there were 51,980 registrants not yet placed with a family practice, which accounts for 5.6% of the total population in Nova Scotia (based on 2016 census data).
- This represents a 0.2% decrease from the July 1, 2019 report where 52,086 registrants were not yet placed.

Figure 1 identifies the number of people in Nova Scotia who have found a primary care provider who were on the NAFP registry or identified through other routes as tracked by NSHA since November 2016.

**Figure 1: Total Provincial Volumes - Found a Primary Care Provider by Month**

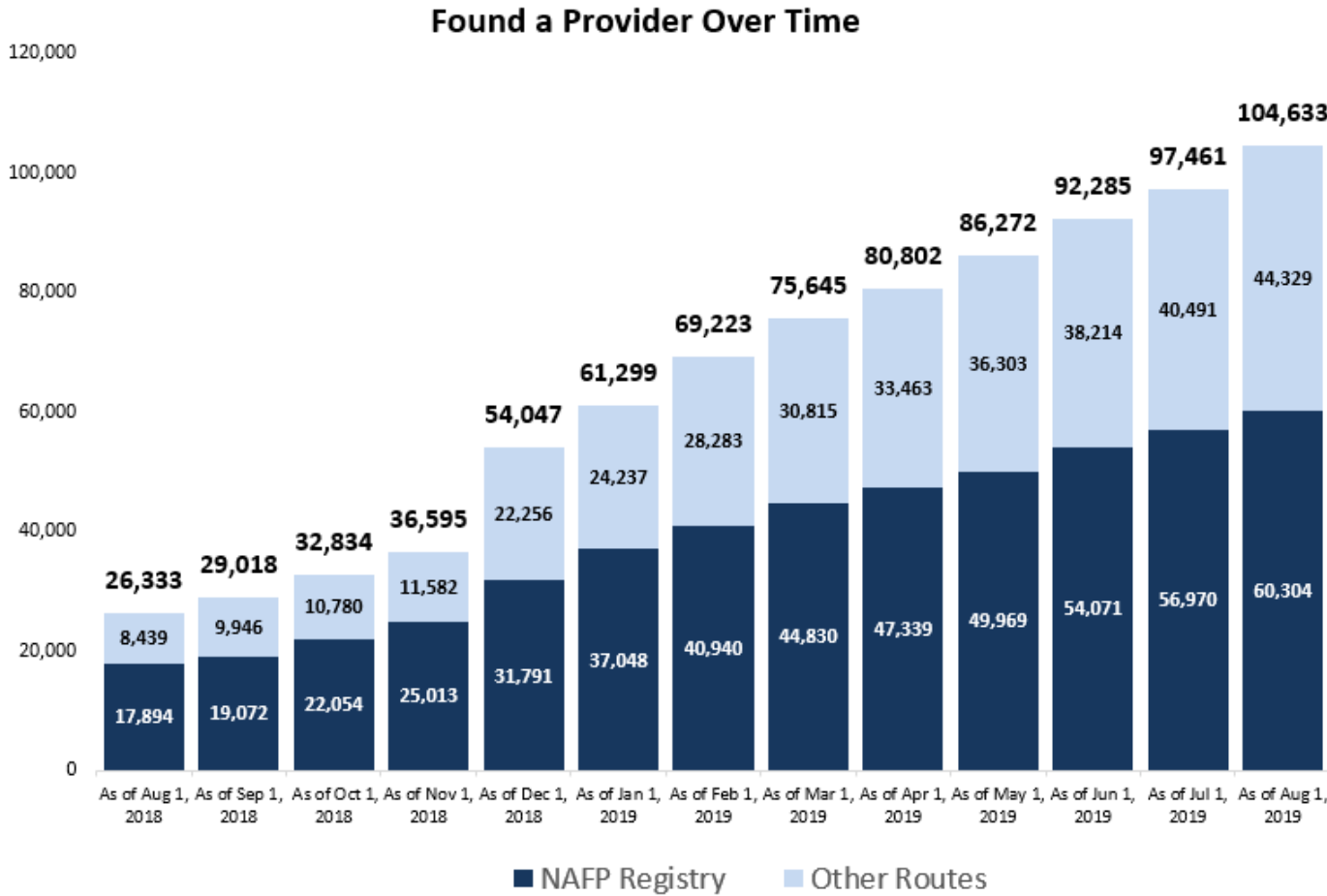
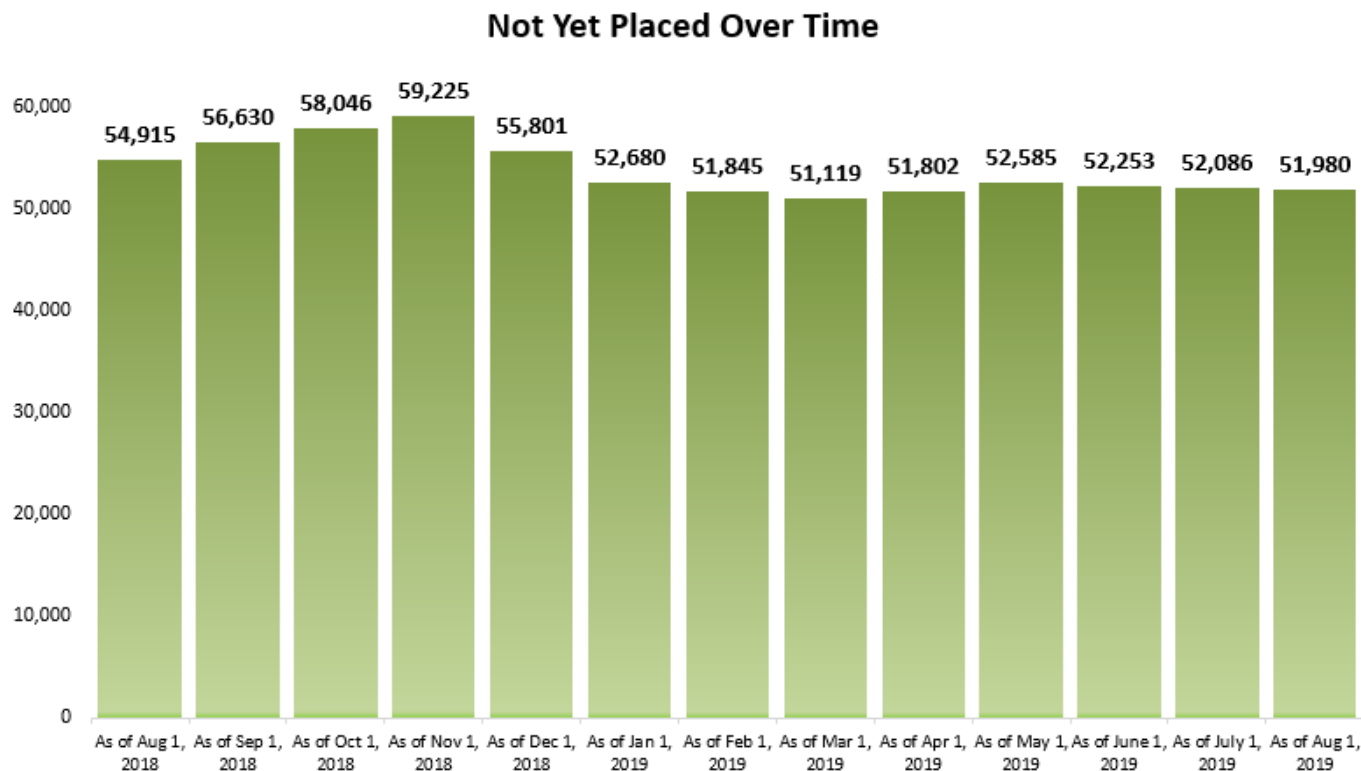


Figure 2 depicts the total number of registrants, by month, on the Need a Family Practice registry that are not yet placed with a family practice.

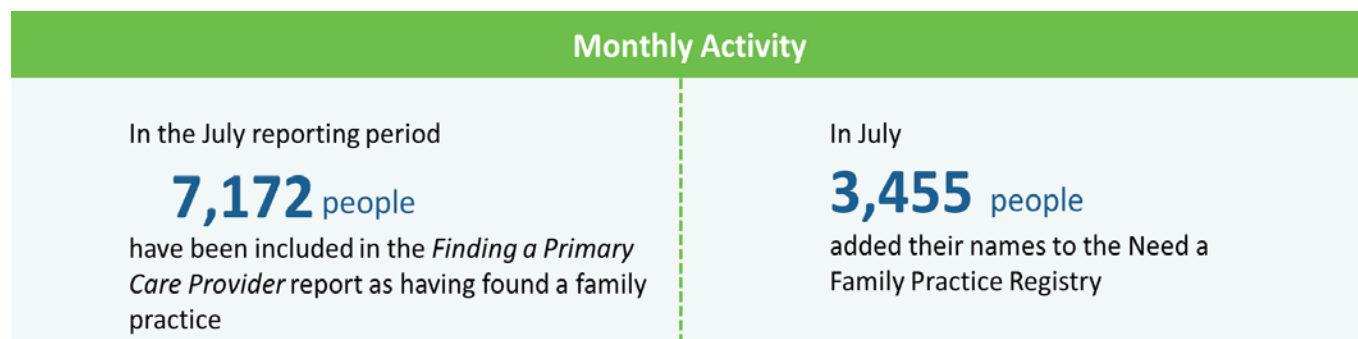
**Figure 2: Total Provincial Volumes - Not Yet Placed by Month**



## 2 | MONTHLY ACTIVITY

During the month of July, 7,172 people found a family doctor or nurse practitioner, and 3,455 people added their names to the Need a Family Practice registry as of August 1. Figure 3 highlights the overall monthly activity during the month of July 2019.


**Figure 3: Provincial Volumes - Monthly Activity**



## Monthly Activity by Zone

Figure 4 provides a summary of the monthly activity that occurred between the July 1 report and the August 1 report.

**Figure 4: Total Zonal Monthly Activity**



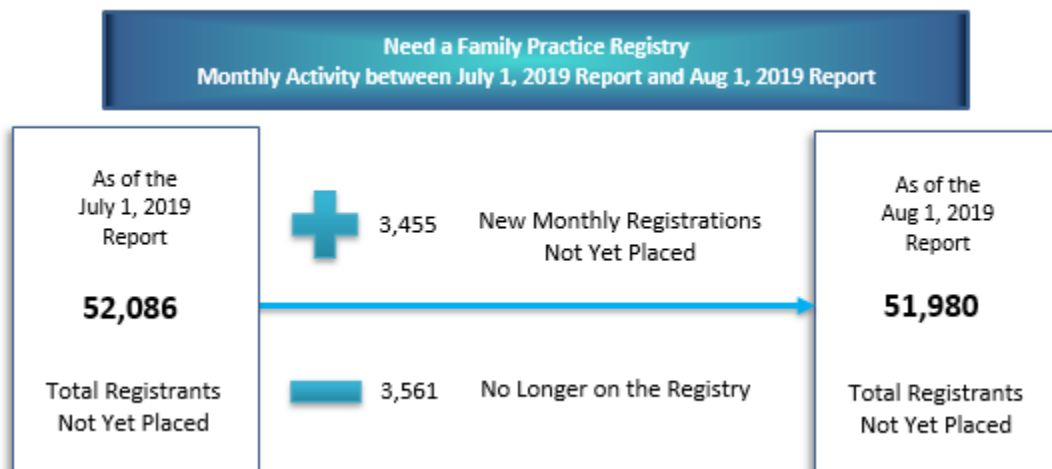
		Jul 1, 2019	Aug 1, 2019	% Change	Aug 1, 2019	Aug 1, 2019
<b>Central Zone</b>	Bedford /Sackville, Dartmouth / Southeastern, Eastern Shore Musquodoboit, Halifax Peninsula / Chebucto, and West Hants	16,862	16,000	-5.1%	3.8%	52,416
<b>Eastern Zone</b>	Antigonish and Guysborough, Cape Breton County, and Inverness / Victoria / Richmond	4,098	4,176	1.9%	2.6%	19,347
<b>Northern Zone</b>	Colchester, Cumberland, and Pictou County	11,733	11,959	1.9%	8.1%	13,543
<b>Western Zone</b>	Annapolis and Kings, Queens and Lunenburg and Yarmouth / Shelburne / Digby	19,385	19,822	2.3%	10.2%	19,126
<b>Unknown Geography</b>	Unknown Geography	8	23	-	-	201
<b>NOVA SCOTIA</b>	<b>TOTAL ACROSS NOVA SCOTIA</b>	<b>52,086</b>	<b>51,980</b>	<b>-0.2%</b>	<b>5.6%</b>	<b>104,633</b>

\*Not yet placed percent of the population relative to the geography's population (i.e., zone)

## Monthly Registry Activity

Specific to the NAFP registry during the month of July, 3,455 new registrations occurred (people who need a family practice) and 3,561 registrants were removed from the registry. People are removed from the registry because they were assisted with finding a family practice or for other reasons, such as already having found a provider when contacted by NSHA or having a duplicate registration. Figure 5 highlights the overall activity in the NAFP registry during the month of July 2019.

**Figure 5: Monthly NAFP Registry Activity**

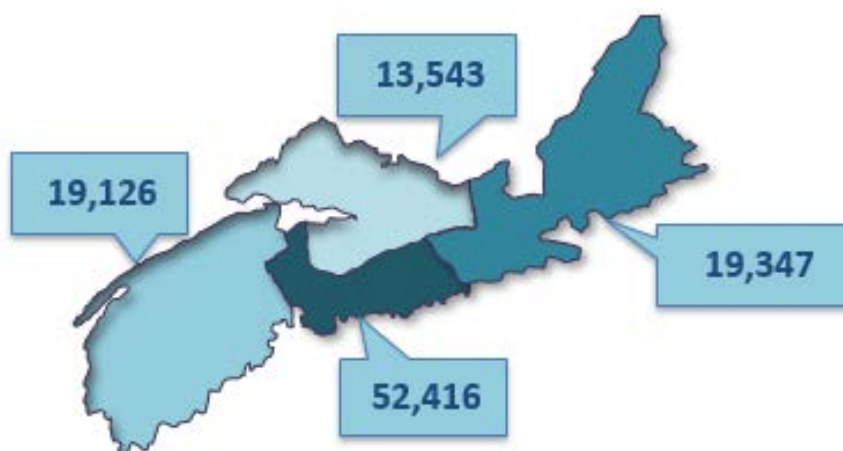


The registry is dynamic, with registrants being added and removed each day. Figure 5 is a simplified graphic that compares two snapshots, one month apart. It depicts the change in the registry total, showing the number of those who have newly registered in the past month, minus the number of people who were no longer on the registry, which is a total of the number of registrants who found a provider and those who have been removed from the registry for other reasons.

### 3 | TOTAL ZONAL VOLUMES: FOUND A PRIMARY CARE PROVIDER

As of August 1, 104,633 Nova Scotians have found a primary care provider who were registered on the NAFP registry or identified through other routes as tracked by NSHA, since November 2016. Figure 6 depicts the breakdown of individuals, by zone, that have found a provider.

**Figure 6:** Total Zonal Volumes - Found a Primary Care Provider



\*Note: 201 have an unknown zone

Table 1 provides the geographic breakdown of the number of people by zone, network, and cluster that found a primary care provider as reported through the NAFP registry or other routes tracked by NSHA, since November 2016.

**Table 1:** Total Zone, Network, and Cluster Volumes - Found a Primary Care Provider – August 1, 2019 Report

Total Zone, Network, and Cluster Volumes - Found a Primary Care Provider – August 1, 2019 Report	
Zone/Network/Cluster	Total # Found a Provider
<b>Central</b>	<b>52,416</b>
<b>Bedford / Sackville</b>	<b>8,197</b>
Bedford / Hammonds Plains	3,713
Fall River / Waverley	1,037
Sackville North / Beaverbank / Mount Uniacke	1,810
Sackville South	1,637
<b>Dartmouth / Southeastern</b>	<b>15,502</b>
Cole Harbour / Eastern Passage	3,793
Dartmouth East	4,436

<b>Total Zone, Network, and Cluster Volumes - Found a Primary Care Provider – August 1, 2019 Report</b>	
<b>Zone/Network/Cluster</b>	<b>Total # Found a Provider</b>
Dartmouth North	2,755
Dartmouth South	3,460
Preston / Lawrencetown / Lake Echo	1,058
<b>Eastern Shore Musquodoboit</b>	<b>2,454</b>
Eastern Shore Musquodoboit	2,454
<b>Halifax Peninsula / Chebucto</b>	<b>19,697</b>
Armdale / Spryfield / Herring Cove	2,780
Clayton Park	4,302
Fairview	2,198
Halifax Chebucto	2,208
Halifax Citadel	2,178
Halifax Needham	2,447
Sambro Loop Area	1,098
Tantallon / Timberlea / St.Margaret's Bay	2,486
<b>West Hants</b>	<b>6,566</b>
West Hants	6,566
<b>Eastern</b>	<b>19,347</b>
<b>Antigonish and Guysborough</b>	<b>812</b>
Antigonish	662
Guysborough / Canso	105
Sherbrooke	45
<b>Cape Breton County</b>	<b>13,858</b>
Dominion / Glace Bay	2,495
Florence / Sydney Mines / North Sydney	2,526
New Waterford	1,760
Sydney	7,077
<b>Inverness / Victoria / Richmond</b>	<b>4,677</b>
Baddeck / Whycomomagh	1,966
Cheticamp	580
Dingwall	36
Inverness	318
Port Hawkesbury / Isle Madame / L'Ardoise	1,777
<b>Northern</b>	<b>13,543</b>
<b>Colchester East Hants</b>	<b>7,418</b>
East Hants Corridor	428
Economy / Glenholme	144
Hants North	512
South Colchester	355
Truro and Area	5,979
<b>Cumberland</b>	<b>1,992</b>
Amherst	317
North Cumberland / North Shore	723
South Cumberland	213

<b>Total Zone, Network, and Cluster Volumes - Found a Primary Care Provider – August 1, 2019 Report</b>	
<b>Zone/Network/Cluster</b>	<b>Total # Found a Provider</b>
Springhill	739
<b>Pictou County</b>	<b>4,133</b>
New Glasgow / Westville / Stellarton	2,485
Pictou West	1,648
<b>Western</b>	<b>19,126</b>
<b>Annapolis and Kings</b>	<b>8,137</b>
Annapolis Royal	253
Berwick	1,034
Kentville	3,272
Middleton	2,380
Wolfville	1,198
<b>Queens and Lunenburg</b>	<b>6,087</b>
Bridgewater	2,258
Chester	1,492
Liverpool	1,619
Lunenburg / Mahone Bay	718
<b>Yarmouth / Shelburne / Digby</b>	<b>4,902</b>
Digby / Clare / Weymouth	1,527
Shelburne / Lockeport	1,242
Yarmouth	2,133
<b>Unknown</b>	<b>201</b>
<b>Total Found a Provider</b>	<b>104,633</b>



## 4 | TOTAL ZONAL VOLUMES – NOT YET PLACED

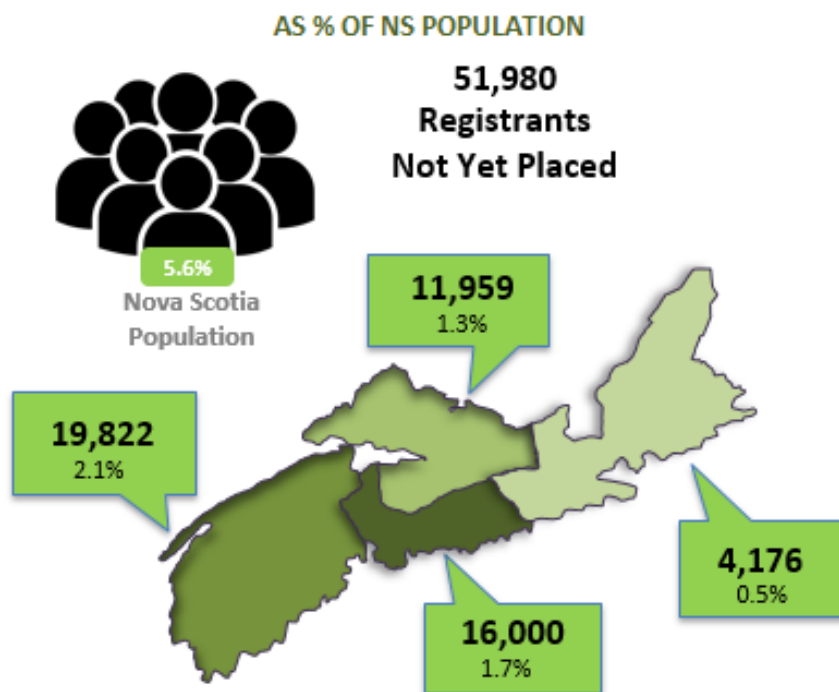
There are 51,980 registrants not yet placed with a family practice as of the August 1 report. The total volumes by zone\* are:

- Central Zone: 16,000 registrations
- Eastern Zone: 4,176 registrations
- Northern Zone: 11,959 registrations
- Western Zone: 19,822 registrations

\*Note: 23 have an unknown zone

Figure 7 gives a high-level overview of the volume of NAFP registrants who are not yet placed, by zone, as a percent of the total Nova Scotia population based on 2016 census counts.

**Figure 7: Total Zonal Volumes - Not Yet Placed as a Percent of the Total Nova Scotia Population**



\*Note: 23 have an unknown zone

Table 2 gives a detailed geographical breakdown of the volume of registrants not yet placed by zone, network, and cluster and as a percent of the corresponding Nova Scotia population by zone, network, and cluster.

**Table 2: Total Volumes Not Yet Placed by Zone, Network, and Cluster and as Percent of Population by Zone, Network, and Cluster**

Total Zone, Network, and Cluster Volumes – Not Yet Placed – August 1, 2019 Report			
Zone/Network/Cluster	Total # Not Yet Placed	Population by Zone, Network, Cluster (2016)	% of Population by Zone, Network, Cluster (2016)
Central	16,000	423,498	3.8%
Bedford / Sackville	2,918	99,581	2.9%

Total Zone, Network, and Cluster Volumes – Not Yet Placed – August 1, 2019 Report			
Zone/Network/Cluster	Total # Not Yet Placed	Population by Zone, Network, Cluster (2016)	% of Population by Zone, Network, Cluster (2016)
Bedford / Hammonds Plains	1,331	40,679	3.3%
Fall River / Waverley	559	21,153	2.6%
Sackville North / Beaverbank / Mount Uniacke	337	15,424	2.2%
Sackville South	691	22,325	3.1%
<b>Dartmouth / Southeastern</b>	<b>4,472</b>	<b>116,491</b>	<b>3.8%</b>
Cole Harbour / Eastern Passage	1,300	35,355	3.7%
Dartmouth East	779	23,264	3.3%
Dartmouth North	956	19,833	4.8%
Dartmouth South	1,131	27,284	4.1%
Preston / Lawrencetown / Lake Echo	306	10,755	2.8%
<b>Eastern Shore Musquodoboit</b>	<b>451</b>	<b>17,474</b>	<b>2.6%</b>
Eastern Shore Musquodoboit	451	17,474	2.6%
<b>Halifax Peninsula / Chebucto</b>	<b>7,547</b>	<b>169,768</b>	<b>4.4%</b>
Armdale / Spryfield / Herring Cove	882	25,640	3.4%
Clayton Park	2,145	34,194	6.3%
Fairview	748	17,104	4.4%
Halifax Chebucto	814	18,939	4.3%
Halifax Citadel	1,248	22,106	5.6%
Halifax Needham	994	19,426	5.1%
Sambro Loop Area	315	12,660	2.5%
Tantallon / Timberlea / St. Margaret's Bay	401	19,699	2.0%
<b>West Hants</b>	<b>612</b>	<b>20,184</b>	<b>3.0%</b>
West Hants	612	20,184	3.0%
<b>Eastern</b>	<b>4,176</b>	<b>158,936</b>	<b>2.6%</b>
<b>Antigonish and Guysborough</b>	<b>296</b>	<b>26,926</b>	<b>1.1%</b>
Antigonish	256	19,301	1.3%
Guysborough / Canso	33	5,039	0.7%
Sherbrooke	7	2,586	0.3%
<b>Cape Breton County</b>	<b>3,494</b>	<b>99,590</b>	<b>3.5%</b>
Dominion / Glace Bay	706	20,713	3.4%
Florence / Sydney Mines / North Sydney	553	19,679	2.8%
New Waterford	583	9,454	6.2%
Sydney	1,652	49,744	3.3%
<b>Inverness / Victoria / Richmond</b>	<b>386</b>	<b>32,420</b>	<b>1.2%</b>
Baddeck / Whycocomagh	23	3,654	0.6%
Cheticamp	0	3,903	0.0%
Inverness	8	6,932	0.1%

Total Zone, Network, and Cluster Volumes – Not Yet Placed – August 1, 2019 Report			
Zone/Network/Cluster	Total # Not Yet Placed	Population by Zone, Network, Cluster (2016)	% of Population by Zone, Network, Cluster (2016)
Port Hawkesbury / Isle Madame / L'Ardoise	354	15,364	2.3%
Dingwall	1	2,567	0.0%
<b>Northern</b>	<b>11,959</b>	<b>147,500</b>	<b>8.1%</b>
<b>Colchester East Hants</b>	<b>5,693</b>	<b>70,658</b>	<b>8.1%</b>
East Hants Corridor	716	12,674	5.6%
Economy / Glenholme	257	5,277	4.9%
Hants North	491	6,945	7.1%
South Colchester	299	10,792	2.8%
Truro and Area	3,930	34,971	11.2%
<b>Cumberland</b>	<b>2,308</b>	<b>33,094</b>	<b>7.0%</b>
Amherst	1,366	13,143	10.4%
North Cumberland / North Shore	600	8,665	6.9%
South Cumberland	159	3,864	4.1%
Springhill	183	7,422	2.5%
<b>Pictou County</b>	<b>3,958</b>	<b>43,748</b>	<b>9.0%</b>
New Glasgow / Westville / Stellarton	3,237	33,561	9.6%
Pictou West	721	10,187	7.1%
<b>Western</b>	<b>19,822</b>	<b>193,664</b>	<b>10.2%</b>
<b>Annapolis and Kings</b>	<b>9,114</b>	<b>78,793</b>	<b>11.6%</b>
Annapolis Royal	954	6,056	15.8%
Berwick	2,059	13,764	15.0%
Kentville	1,421	23,893	5.9%
Middleton	4,225	20,910	20.2%
Wolfville	455	14,170	3.2%
<b>Queens and Lunenburg</b>	<b>5,308</b>	<b>57,933</b>	<b>9.2%</b>
Bridgewater	2,533	26,711	9.5%
Chester	865	11,778	7.3%
Liverpool	931	10,351	9.0%
Lunenburg / Mahone Bay	979	9,093	10.8%
<b>Yarmouth / Shelburne / Digby</b>	<b>5,400</b>	<b>56,938</b>	<b>9.5%</b>
Digby / Clare / Weymouth	2,351	18,553	12.7%
Shelburne / Lockeport	922	13,966	6.6%
Yarmouth	2,127	24,419	8.7%
<b>Unknown</b>	<b>23</b>	<b>-</b>	<b>0.0%</b>
<b>Total # Not Yet Placed</b>	<b>51,980</b>	<b>923,598</b>	<b>5.6%</b>